



NSM

BQ HINGES



Product characteristics

Hinges to accommodate every type of bankbed function and design.

Manufactured by

Sedac: NSM

Meral: NSM, BQ-3015 and 5001

Sedac Shanghai: NSM and 2000



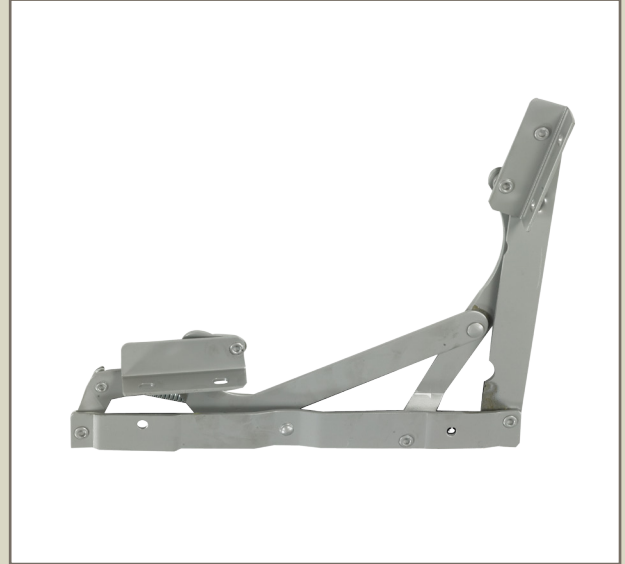
BQ 3015



BQ HINGES



NSM
Sedac-Meral's 3-position hinge with a fix, relax and (horizontal) bed position.



3015
Complete set of hinges and bars to make a wide sofa wich does not look like a bankbed.



2000
2-position hinge, operated from the back with a sofa and bed position.



5001
3-position hinge for a bankbed with thicker mattresses or a bankbed with movable armrests ("ears").